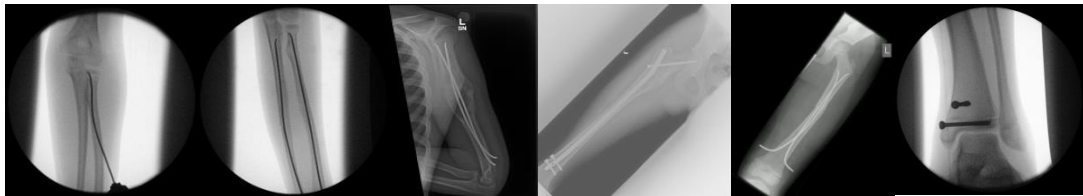




**3rd SHEFFIELD CHILDREN'S HOSPITAL  
PAEDIATRIC ORTHOPAEDICS AND TRAUMA  
SKILLS (SPOTS) COURSE**

**Wednesday 22 – Friday 24 June 2022**



**International Faculty**

**Trauma and elective topics with interactive lectures**

**Breakout sessions with hands-on technique training, saw bone workshops and operative simulation**

**Cadaveric Approaches Session**

A 3-day course designed to cover paediatric practical skills for revalidating Consultants and Senior Trainees

**[www.spotscourse.com](http://www.spotscourse.com)**



# SPOTS COURSE



## **COURSE FEE: £395.00**

**To register please complete the [registration form](#) online and send payment via BACS or cheque for £395.00. Early registration recommended. Cancellation, full refund until 29 April 2022.**

Cheques: payable to the *Paediatric Orthopaedic Research Fund*  
c/o Kate Chick – SPOTS Event Manager  
Freerange Events UK Ltd, 24 Orchard Rise, Olveston, Bristol, BS35 4DY

BACS payments: NatWest Bank<sup>[SEP]</sup>  
Account name (business account): Paediatric Orthopaedic Research Fund  
Sort code: 544134  
Account number: 22765832<sup>[SEP]</sup>  
IBAN: GB78NWBK54413422765832

Contact: [katechick@btinternet.com](mailto:katechick@btinternet.com) 07748 933231

## **COURSE CONVENERS**

Miss C Blakey  
Consultant Orthopaedic Surgeon  
[caroline.blakey1@nhs.net](mailto:caroline.blakey1@nhs.net)

Mr N Green  
Consultant Orthopaedic Surgeon  
[nick.green6@nhs.net](mailto:nick.green6@nhs.net)

## **SPONSORSHIP ENQUIRIES TO**

Kate Chick – SPOTS Event Manager  
Contact: [katechick@btinternet.com](mailto:katechick@btinternet.com) 07748 933231

## **RECOMMENDED ACCOMMODATION**

We have rooms provisionally reserved for delegates to reserve and pay for directly with two hotels – The Halifax Hall Hotel and the Jonas Hotel. Both properties are 1.2 miles from the INOX Centre.

Halifax Hall Hotel - £78.00 per room per night (B&B)

Jonas Hotel - £45 per room per night (Room only)

Please contact the SPOTS event manager for more details about how to book your accommodation should you wish to [katechick@btinternet.com](mailto:katechick@btinternet.com)

# Day 1 - Wednesday 22 June 2022



	Group 1	Group 2	Group 3
<b>Time</b>	<b>VENUE: INOX CENTER – SHEFFIELD UNIVERSITY</b>		
07:45 – 08:00	Registration & Coffee		
8:00 - 8:15	Welcome, Introduction & Housekeeping		
08:15 - 08:45	PRESENTATION – Introduction to Paediatric Lower Limb Trauma		Nick Nicolaou
08:45 – 09:15	PRESENTATION - Femoral & Tibial elastic nailing principles with Tips & Tricks		Jean-Damien Metaizeau
09:15:- 10:15	SKILLS STATION 3 - elastic nailing LL	SKILLS STATION 3 – elastic nailing LL	SKILLS STATION 3 – elastic nailing LL
10:15 – 11:15	INTERACTIVE CASE DISCUSSIONS LEN v ESIN Femoral neck and shaft fractures Floating knee. Tibial spine fracture	INTERACTIVE CASE DISCUSSIONS LEN v ESIN Femoral neck and shaft fractures Floating knee	INTERACTIVE CASE DISCUSSIONS LEN v ESIN Femoral neck and shaft fractures Floating knee
11:15 – 11:30	COFFEE		
11:30 -12:30	SKILLS STATION 4 – PNP Nail	SKILLS STATION 4 - PNP Nail	SKILLS STATION 4 - PNP Nail
12:30 – 13:00	PRESENTATION – Paediatric Lower Limb trauma challenging & pitfall cases		Eric Gordon
13:00 – 13:30	LUNCH		
13:30 – 14:00	PRESENTATION: Introduction to Paediatric upper limb trauma		James Hunter
14:00 – 14:30	PRESENTATION: Humerus & Forearm elastic nailing principles with Tips & Tricks		Jean Guichet
14:30 - 15:30	SKILLS STATION - elastic nailing UL	SKILLS STATION - elastic nailing UL	SKILLS STATION - elastic nailing UL
15:30 - 16:30	CASE DISCUSSIONS - upper limb trauma Supracondylar Fracture Lateral Condylar Radial Neck fractures Monteggia Trash elbow	CASE DISCUSSIONS - upper limb trauma Supracondylar Fracture Lateral Condylar Radial Neck fractures Monteggia Trash elbows	CASE DISCUSSIONS - upper limb trauma Supracondylar Fracture Lateral Condylar Radial Neck fractures Monteggia Trash elbows
16:30 – 16:45	Break	Break	Break
16:45 – 17:15	PRESENTATION – Lower limb alignment and guided growth		Liz Moulder
17:15 – 18:00	Interactive PANEL CASE BASED DISCUSSION On Complex Trauma cases		All Faculty

# Day 2 - Thursday 23 June 2022



	Group 1	Group 2	Group 3
<b>Time</b>	VENUE: INOX centre, University of Sheffield		
07:45 – 08:00	<i>Coffee</i>		
08:00-08:30	Live (Melbourne): Current concepts & techniques on CP Proximal Femoral Varus De-Rotation Osteotomy		Prof Kerr Graham
08:30 – 09:00	Live (Melbourne): Current concepts & techniques on torsional deformity		Prof Kerr Graham
09:00 – 09:15	Q&A session CP/ITD		JPC/OGE
09:15 - 0945	Skills Station 1 Sawbones CP VDRO Practical	Skills Station 2 Sawbones Basics of Gait Analysis	Case-Based Discussions CP
09:45 – 10:15	Case-Based Discussions CP	Skills Station 1 Sawbones CP VDRO Prac tical	Skills Station 2 Sawbones Basics of Gait Analysis
10:15 – 10:45	Skills Station 2 Sawbones Basics of Gait Analysis	Case-Based Discussions CP	Skills Station 1 Sawbones CP VDRO Practical
10:45-11:00	<i>Coffee</i>		
11:00 – 11:20	VIDEO – Anterior approach to the hip		
11:20 – 11:45	PRESENTATION – DDH early management of DDH		Om Lahoti
11:45 – 12:45	INTERACTIVE CASE DISCUSSIONS Pavlik Harness – Practical (Orthotist) Late presenting DDH management Residual DDH Management adolescent	INTERACTIVE CASE DISCUSSIONS Pavlik Harness – Practical (Orthotist) DDH AVN management Residual DDH Management adolescent	INTERACTIVE CASE DISCUSSIONS Pavlik Harness - Practical (Orthotist) DDH AVN management Residual DDH Management adolescent
12:45 – 13:45	<i>Lunch</i>		
13:45 – 14:30	PRESENTATION – Update on paediatric infection		Anish Sangharajka
14:30 – 15:15	LIVE PRESENTATION - (Manipal) Perthes. how I treat and why		Prof Benjamin Joseph
15:15 – 15:30	SCFE – Sheffield Unstable SCFE Pathway		Nick Green
15:30 – 15:45	<i>Break</i>		
15:45-16:15	SUFE pinning Case Examples and Video	Infection Case Discussion	Hip Spica Practical
16:15-16:45	Hip Spica Practical	SUFE pinning Case Examples and Video	Infection Case Discussion
16:45-17:15	Infection Case Discussion	Hip Spica Application	SUFE pinning Case Examples and Video
	Close	Close	Close
19:00	Course Dinner		

# Day 3 - Friday 24 June 2022



	Group 1	Group 2	Group 3
<b>Time</b>	<b>VENUE:</b> INOX centre, University of Sheffield		
8.45-09:00	Coffee		
09:00-09:15	Intro to paediatric foot section. Ponseti Recap		Mark Flowers
09:15 – 09:45	<b>Practical 1:</b> idiopathic clubfoot casting & CBD	<b>Case Based Discussions:</b> Management of Residual & Recurrent CTEV, role of Ilizarov Frame.	<b>Practical 2: Atypical Clubfoot &amp; Congenital Vertical Talus</b>  Atypical clubfoot casting & Reverse Ponseti
09:45 – 10:15	<b>Practical 2: Atypical Clubfoot &amp; Congenital Vertical Talus</b>  Atypical clubfoot casting & Reverse Ponseti	<b>Practical 1:</b> idiopathic clubfoot casting & CBD	<b>Case Based Discussions:</b> Management of Residual & Recurrent CTEV, role of Ilizarov Frame.
10:15 – 10:45	<b>Case Based Discussions:</b> Management of Residual & Recurrent CTEV, role of Ilizarov Frame.	<b>Practical 2: Atypical Clubfoot &amp; Congenital Vertical Talus</b>  Atypical clubfoot casting & Reverse Ponseti	<b>Practical 1:</b> idiopathic clubfoot casting & CBD
10.45 - 11.00	<i>Coffee</i>		
11:00 -11:30	Upper Limb Approaches Videos and case examples	Lower Limb approaches videos and case examples	Pelvis/Hip approaches videos and case examples
11:30 – 12:00	Pelvis/Hip approaches videos and case examples	Upper Limb Approaches Videos and case examples	Lower Limb approaches videos and case examples
12:00 – 12:30	Lower Limb approaches videos and case examples	Pelvis/Hip approaches videos and case examples	Upper Limb Approaches Videos and case examples
12.30- 13.15	<i>Lunch</i>		
13:15 – 13:45	Normal Variants		Sarah Hill
13.45- 14.15	Idiopathic Flat Foot, and Cavovarus Foot.		Jim Brousil
14:15 – 14:45	Principles of fixing pathological fractures		
14:45 – 15:00	<i>Coffee</i>		
15.00-15:30	SCFE & Perthes Cases		Sanjeev Madan
15:30- 16:00	Q&A Session with all faculty on any topic covered		
16:00 -16:10	Final remarks and Feedback		
16:10	Certificates and close		